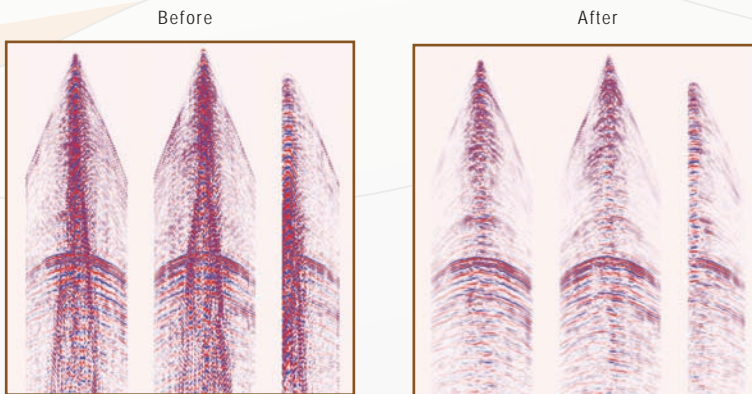


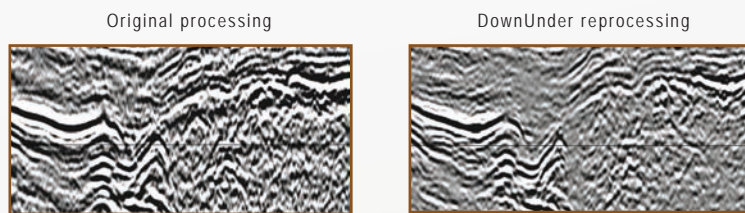
Seismic Processing & Depth Imaging

DownUnder's processing and imaging toolkit contains all modules which form part of a modern processing system. From Radon to SRME demultiple, from wavelet based to tauP denoise, from traditional to tomographic static solutions.

For imaging, DownUnder offers both Kirchhoff and full waveform solutions. Model building is accomplished by traditional and/or tomographic approaches.

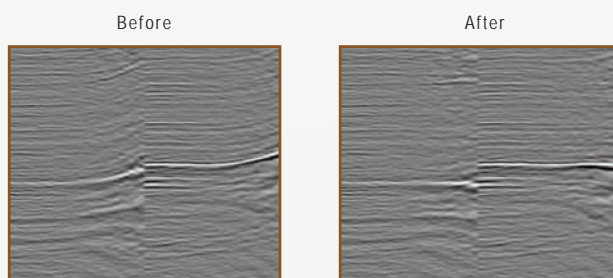


Wavelet transform based denoise.

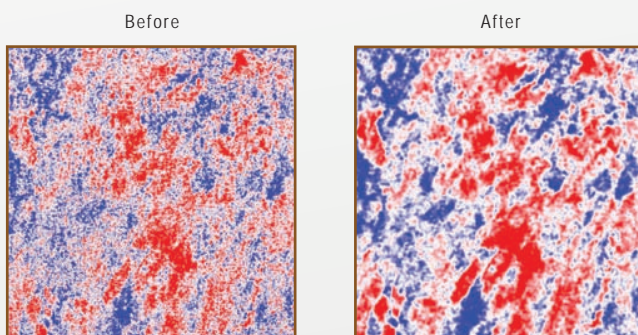


Reprocessing of land data showing fault definition and general clarity.

** Picture courtesy of Stuart Petroleum*



Anisotropic residual moveout.



Timeslice before and after acquisition footprint removal. Noise that appears random on the timeslice is cleanly removed by deterministic footprint removal.



DownUnder
GeoSolutions

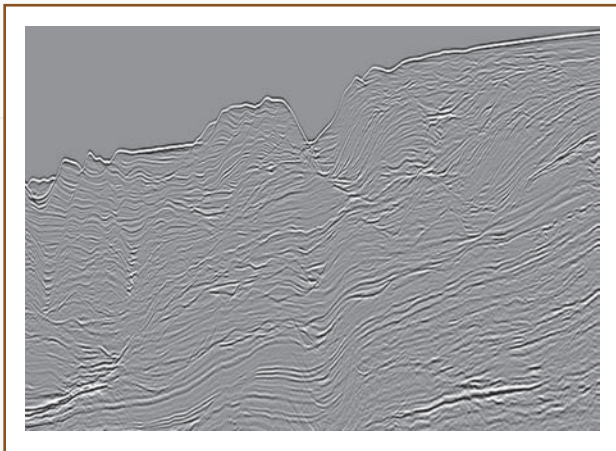
DownUnder GeoSolutions Pty Ltd | 80 Churchill Avenue Subiaco WA 6008 Australia
T +61 8 9287 4100 | F +61 8 6380 2471 | info@dugeo.com | www.dugeo.com

Seismic Processing & Depth Imaging

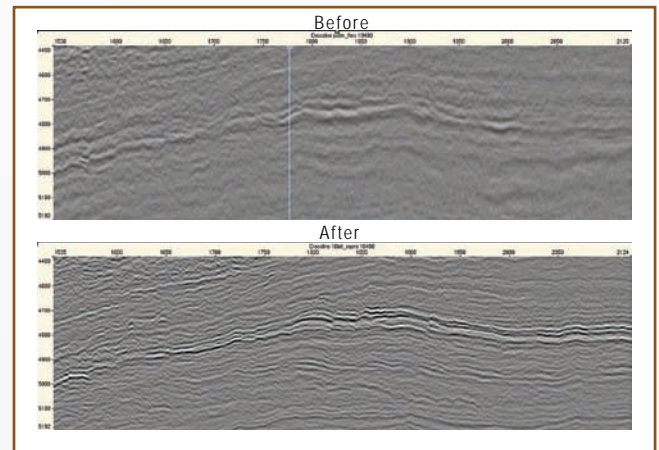
Many 3D and 2D processing and reprocessing projects have been completed. These include both land and marine, large and small surveys.

DownUnder's hardware consists of over 1000 modern compute nodes, over 130 terabytes of disk, plus high end workstations and tape drives.

The majority of DownUnder's processing to date has been focussed on producing true amplitude, accurately positioned seismic data for quantitative interpretation.



Marine processing example.
**Picture courtesy of Nido Petroleum.*



Reprocessed far stack from image gathers.
**Picture courtesy of Fusion Oil and Gas.*



1000 compute cpus, 130 terabytes HDD, tape drives.



DownUnder
GeoSolutions

DownUnder GeoSolutions Pty Ltd | 80 Churchill Avenue Subiaco WA 6008 Australia
T +61 8 9287 4100 | F +61 8 6380 2471 | info@dugeo.com | www.dugeo.com